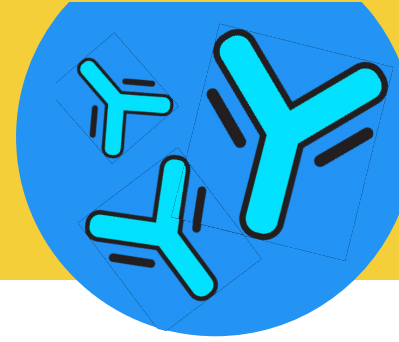


Test Positive for COVID-19?



We are now offering in-home monoclonal antibody treatments.

What is monoclonal antibody COVID-19 treatment?

Monoclonal antibodies (mAb) are laboratory-made proteins that mimic natural antibodies' ability to fight viruses, such as COVID-19. REGEN-CoV (casirivimab and imdevimab) antibodies directly target the spike protein of the COVID-19 virus. This can decrease severity of disease progression and reduce risk of hospitalization.

The PREP act allows pharmacists to administer mAb treatments in patients' homes to decrease barriers in care and better improve overall patient outcomes by intervening early in disease progression when patient is experiencing mild to moderate symptoms.

Who is REGEN-CoV for?

Patients may be eligible for monoclonal antibody treatment if :

- Tested positive for COVID-19 in last 10 days
- 12 years or older and weigh more than 88 pounds
- Have had mild to moderate symptoms of COVID-19
- 1 or more high-risk factors for COVID-19 disease progression. Include but not limited to: race or ethnicity, age of ≥ 65 years, obesity (BMI > 25), immunosuppressive disease or medication, chronic kidney disease, current or former smoking status, diabetes, cardiovascular disease or hypertension, chronic lung diseases, sickle cell disease, neurodevelopmental disorders, medical-related technological dependence (tracheostomy, gastrostomy, etc)

*NOTE: Due to high demand and limited resources, our current effort is to focus support on the Medicare population, but we will continue to expand based on resource availability.

Talk To Your Doctor About Your Condition Today

Your doctor can directly fax a referral form and your positive COVID-19 test results to the pharmacy at 717-626-7920. A member of our mAb team will reach out to you after to schedule a home visit.

REGEN-COV (casirivimab and imdevimab) is not authorized for use in patients:

- who are hospitalized due to COVID-19, OR
- who require oxygen therapy due to COVID-19, OR
- who require an increase in baseline oxygen flow rate due to COVID-19 in those on chronic oxygen therapy due to underlying non-COVID-19 related comorbidity.

Lititz Apothecary
100 E Main St, Lititz, PA 17543
Phone: (717) 626-2222
Fax: (717) 626-7920